



NW
Monday 27/02/2017
 Page: 68
 Section: General News
 Region: National, AU
 Circulation: 52807
 Type: Magazines Lifestyle
 Size: 6,801.00 sq.cms.



slice
 CUT STRAIGHT TO YOUR NEWS

press clip





NW
Monday 27/02/2017
 Page: 68
 Section: General News
 Region: National, AU
 Circulation: 52807
 Type: Magazines Lifestyle
 Size: 6,801.00 sq.cms.



slice
 CUT STRAIGHT TO YOUR NEWS

press clip





NW
Monday 27/02/2017
 Page: 68
 Section: General News
 Region: National, AU
 Circulation: 52807
 Type: Magazines Lifestyle
 Size: 6,801.00 sq.cms.

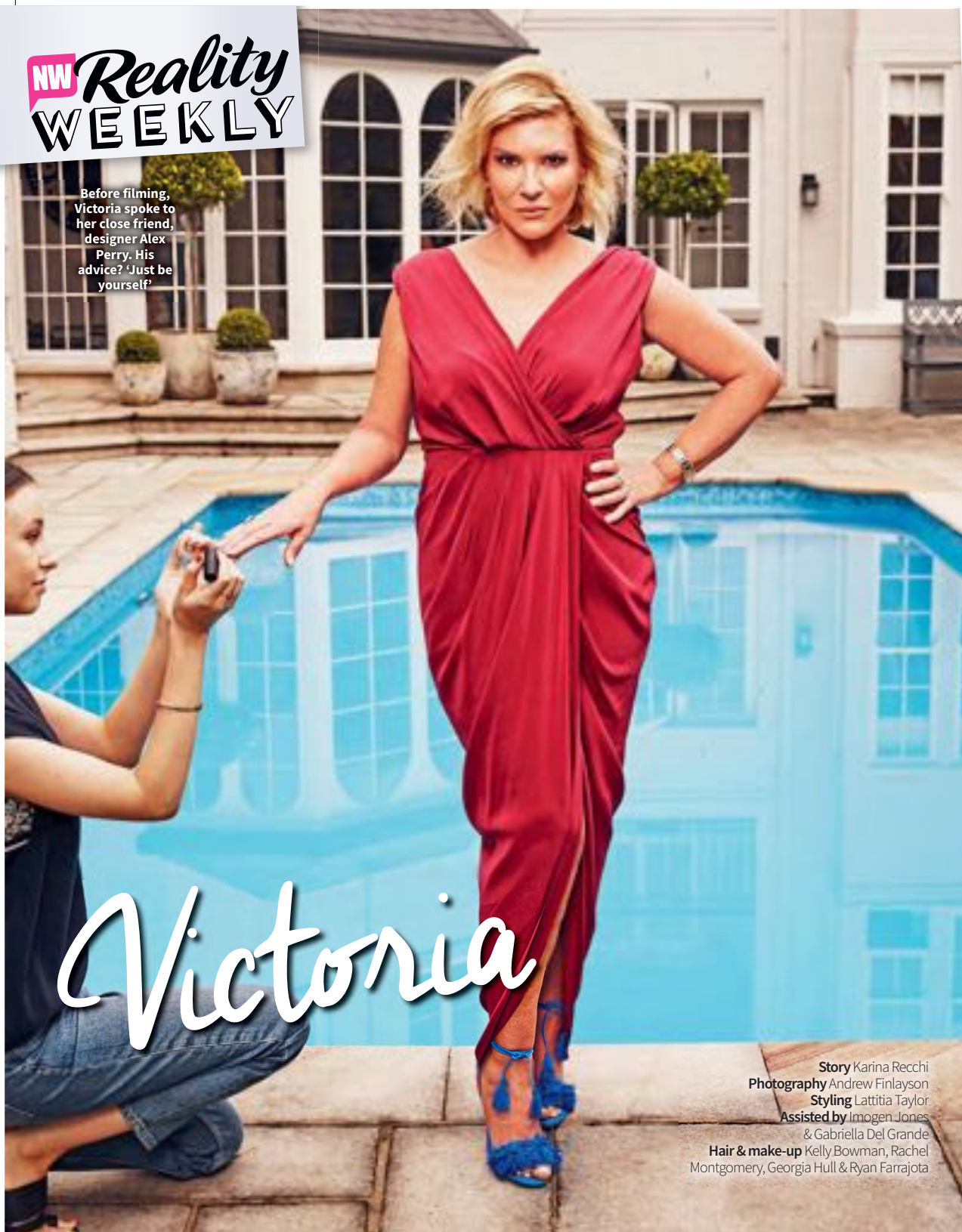


slice
 CUT STRAIGHT TO YOUR NEWS

press clip

NW Reality WEEKLY

Before filming, Victoria spoke to her close friend, designer Alex Perry. His advice? 'Just be yourself'



Victoria

Story Karina Recchi
Photography Andrew Finlayson
Styling Lattitia Taylor
Assisted by Imogen Jones & Gabriella Del Grande
Hair & make-up Kelly Bowman, Rachel Montgomery, Georgia Hull & Ryan Farrajota